



The crop was just sprayed. Can I work there today?

Dan and Jim work on a broccoli farm. One day, after the field had been treated with methyl bromide, a [fumigant](#), Dan remembered that he needed to make a simple repair on the irrigation system in the field. Although it had only been about an hour since the fumigation, Jim told Dan it would probably be safe to go in for a couple of minutes.

Dan entered the field and spent about ten minutes fixing the irrigation system. He then continued with his other tasks around the farm. Dan began to have a headache and felt a little dizzy but he didn't think anything of it.

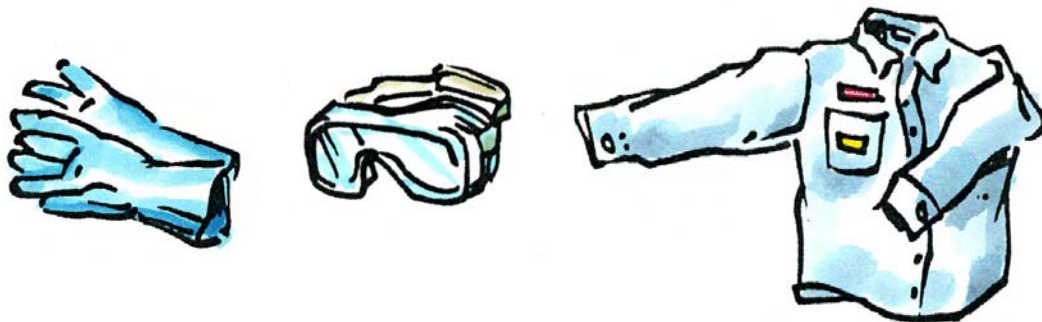
Shortly afterwards, Dan and Jim got in their truck and started driving. By then, Dan's head was spinning and pounding. Then he suddenly began to shake and vomit. Jim rushed him to the emergency clinic.

At the clinic, Dan asked the doctor why he became so sick. After all, he was only in the broccoli field for a few minutes. The doctor told Dan that [methyl bromide](#) is highly toxic. That means even small exposures to methyl bromide can cause sickness; they can even cause death. The doctor said he entered the field too soon after the treatment.

Dan began to wonder how long he should have waited to enter the field after the fumigation.

The doctor suggested that Dan call the [National Pesticide Information Center \(NPIC\)](#) at 1-800-858-7378 to find out more information about working in a field treated with a pesticide.

[Click here](#) to find out what Dan learned when he called NPIC...



Call toll-free **1.800.858.7378**

8:00 am to 12:00 pm Pacific Time (PT), Monday - Friday

Visit us anytime on the web at npic.orst.edu



Take Home Message

The crop was just sprayed. Can I work there today?

The specialist told Dan that he could have been exposed to methyl bromide by breathing vapors leaking from the tarps. The specialist explained that Dan put himself at risk by entering the field without checking for the [Restricted Entry Interval \(REI\)](#). The REI is the amount of time workers have to wait before entering the field after pesticide treatments. In fact, the REI is a part of the [Worker Protection Standard \(WPS\)](#), which is designed to protect workers like Dan.

Dan learned that the REI for the product used was 48 hours. The specialist listed three places to find the REI and other precautions for pesticides used in the field.

- [Follow the label.](#) Pesticide labels have REIs and other precautions listed in the “Agricultural Use Requirements” section. There are few exceptions to the REI. Check the label and the [WPS handbook](#) for more information.
- There must be a [central location](#) where pesticide and emergency information is posted, including the active ingredient, when it was applied, REI, and emergency contact information.
- [Posted signs.](#) In most cases, the employer is required to post signs at the entrances to the treated area warning people not to enter.

Dan realized how important it is to follow posted information and label instructions. He decided that he would check the bulletin board every day before working in or around the broccoli fields.

Pesticide product labels include specific instructions for protecting workers. Always read and follow the label directions carefully. For information on exceptions or state-specific requirements, contact your [state pesticide regulatory office](#).

